



GAT MONTHLY MEMBERSHIP PROGRESS REPORT

Results as of: 2/28/2023

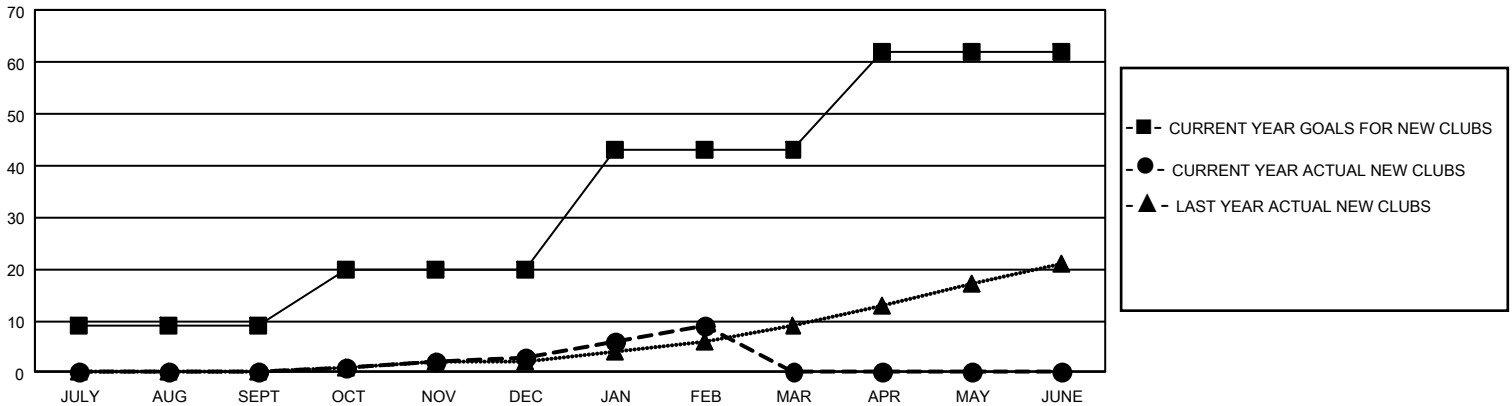
GAT Constitutional Area 5 - Japan

REPORT DOES NOT INCLUDE CLUBS IN UNDISTRICTED AREAS.

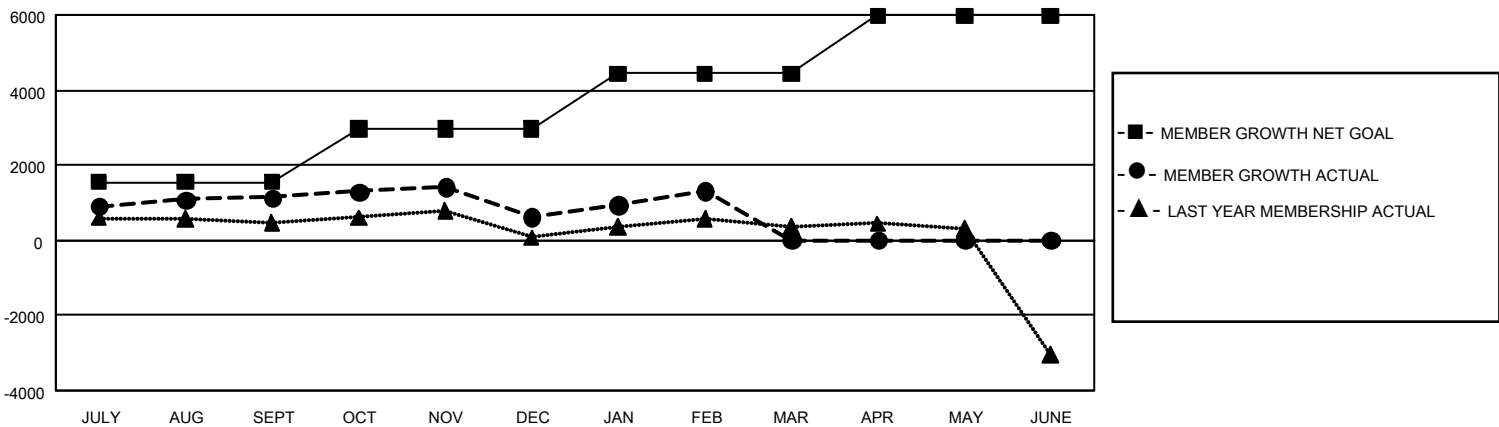
Clubs			
RESULTS FOR 2022-2023			
QUARTER	NEW CLUB GOAL	NEW CLUBS	DROPPED CLUBS
JULY/AUG/SEPT	27	0	5
OCT/NOV/DEC	33	3	5
JAN/FEB/MAR	69	6	2
APR/MAY/JUNE	57	0	0

Members			
RESULTS FOR 2022-2023			
QUARTER	MEMBER GROWTH NET GOAL	MEMBER GROWTH ACTUAL	DROPPED MEMBERS ACTUAL (including transfers)
JULY/AUG/SEPT	1540	2,714	1,429
OCT/NOV/DEC	1435	1,318	1,776
JAN/FEB/MAR	1461	1,489	755
APR/MAY/JUNE	1540	0	0

GOALS AND ACTUAL NEW CLUBS CUMULATIVE



GOALS AND ACTUAL MEMBERS CUMULATIVE



DROPPED CLUBS: 12	1,763 CLUBS OF 2,814 ADDED 1 OR MORE NEW MEMBERS	GENDER DISTRIBUTION	
		MALE 76,530 (76.43%)	FEMALE 23,590 (23.56%)
DROPPED MEMBERS		NON BINARY 1 (0.00%)	PREFER NOT TO ANSWER 9 (0.01%)
DECEASED 582	CLICK HERE FOR CUMULATIVE MEMBERSHIP DATA	TOTAL FAMILY UNIT MEMBERS 33,658	
CLUB CANCELLED 18		FAMILY MEMBERS PAYING HALF DUES 18,621	
OTHER 3,359			
TOTAL 3,959			